

## Effect of Risk Factor in Coronary Heart Disease (CHD)

Dr. Md. Habibur Rahman<sup>1\*</sup>, Prof. (Dr.) Md. Faruque<sup>2</sup>, Dr. Khondker Shaheed Hussain<sup>3</sup>, Dr. Md. Sirajum Munir<sup>4</sup><sup>1</sup>Assistant Professor, MD, Cardiology, US Bangla Medical College, Dhaka, Bangladesh<sup>2</sup>Professor, MD, Cardiology, Anwar Khan Modern Medical College, Dhaka, Bangladesh<sup>3</sup>Associate Professor, MD, Cardiology, National Institute of Cardiovascular Diseases, Dhaka, Bangladesh<sup>4</sup>Assistant Professor, MD, Cardiology, Kushtia Medical College, Kushtia, BangladeshDOI: [10.36347/sjams.2019.v07i11.014](https://doi.org/10.36347/sjams.2019.v07i11.014)

| Received: 21.10.2019 | Accepted: 28.10.2019 | Published: 15.11.2019

\*Corresponding author: Dr. Md. Habibur Rahman

### Abstract

### Original Research Article

**Objectives:** In this study our main aim to evaluate the effect of risk factor in Coronary heart disease (CHD). **Methods:** This cross-sectional observational study was done in NICVD, Dhaka from October 2010 to September 2011. A total of 100 consecutive patients were included. Study populations were sub-divided into two groups on the basis of cTn I level. In group I cTn I level  $\geq 20$ ng/ml and in group II cTn I level  $< 20$ ng/ml. 50 patients were included in group I and 50 patients were included in group II. **Results:** In group-1 most of the patients belong to 40-50 years age group where as in group-2 majority belong to  $> 50$  years age group. Prevalence of smoking habit was higher in Group I than that in Group II (78% vs. 56%) with statistically significant difference ( $p=0.02$ ). Hypertension was almost identically distributed between two groups (62% vs. 58%,  $p=0.68$ ). Diabetes and dyslipidaemia were also higher in group I than that of group II (60% vs. 36%) and (66% vs. 34%) respectively with statistically significant difference ( $p=0.02$  and  $p=0.001$ ). **Conclusion:** From our study we can conclude that smoking, diabetes mellitus, dyslipidaemia, and cTn I were emerged as independent predictors of CAD. Further study is needed for better outcome.

**Keywords:** Coronary heart disease (CHD), diabetes mellitus, dyslipidaemia, cTn I.

**Copyright © 2019:** This is an open-access article distributed under the terms of the Creative Commons Attribution license which permits unrestricted use, distribution, and reproduction in any medium for non-commercial use (NonCommercial, or CC-BY-NC) provided the original author and source are credited.

## INTRODUCTION

Coronary heart disease (CHD) is a major cause of death and is a global health problem reaching epidemic in both developed as well as in developing countries. The acute coronary syndrome is a frequent presentation of cardiovascular disease. Acute coronary syndrome (ACS) refers to a spectrum of acute severe cardiac disorders which include unstable angina (UA), Non-ST-segment elevation myocardial infarction (NSTEMI), and ST-segment elevation myocardial infarction (STEMI). It has emerged as a major health burden in developing countries and is a subject of great concern for its significant contribution to mortality. It is a major cause of cardiovascular morbidity and mortality for which timely diagnosis and appropriate therapy is of paramount importance to improve clinical outcome [1-3].

High rates of coronary heart disease in people of South Asian (Indian, Pakistani, and Bangladeshi) origin were first reported from Singapore, South Africa, and Trinidad in 1950s, similar findings were recorded in the United Kingdom at the time of the 1971 census. The clinical picture in South Asian patients with

coronary heart disease is similar to that in Europeans. Smoking in South Asian patients is generally less common, average plasma cholesterol concentrations are lower and diabetes is more common than in European patients.

The prevalence of CAD in Bangladesh was estimated as 3.3 per thousand in 1976 and 17.2 per thousand in 1986 indicating fivefold of the disease by 10 years. Three small scale population-based studies showed average prevalence of ischemic heart disease 6.5 per thousand population of Bangladesh [4]. In this study our main goal is to evaluate the effect of risk factor in Coronary heart disease (CHD).

## OBJECTIVE

### General objective

To evaluate the effect of risk factor in Coronary heart disease (CHD).

### Specific objective

To identify systolic Diastolic BP of patients

To detect association of predictors of significant coronary artery disease with risk factors

## METHODOLOGY

### Study type

- It was a cross sectional study.

### Place and period of the study

- This study was carried out in NICVD, Dhaka from October 2010 to September 2011.

### Inclusion criteria

- Ischemic symptoms

### Study population

All patients diagnosed as acute STEMI admitted in NICVD and undergoing coronary angiography during hospital admission were taken as study population. A total of 100 consecutive patients were included. Study populations were sub-divided into two groups on the basis of cTn I level. In group I cTn I level  $\geq 20$ ng/ml and in group II cTn I level  $< 20$ ng/ml. 50 patients were included in group I and 50 patients were included in group II.

### Method

All patients admitted in Cardiology department of NICVD, Dhaka, fulfilling the inclusion criteria and exclusion criteria was considered for study. Informed written consent was taken from all patients or from legal guardian before enrollment. Acute STEMI was diagnosed by ESC/ACC guideline 2004. Initial evaluation of the patients by history and clinical

examination was performed and recorded in patients' data collection sheet. Demographic profile, and pulse, blood pressure, body weight were recorded. Serum cTn I level was estimated and recorded by Immulite 1000 Troponin I. (SIEMENS Medical Solutions Diagnostic, Los Angeles, CS, USA). Echocardiographic ejection fraction was recorded on second or third day of hospitalization. Coronary angiogram was done during hospital admission. Angiographic severity of coronary artery disease was assessed by Vessel score and Stenosis score.

## STATISTICAL ANALYSIS

The numerical data obtained from the study was analyzed and significance of differences was estimated by using statistical methods. Computer based SPSS (Statistical Package for Social Science) was used. Data is expressed in percentage, frequencies, means and standard deviation as applicable by simple linear analysis, Pearson  $\chi^2$  square test, Students' t test, Pearson's correlation coefficient test, multivariate logistic regression analysis and Fisher's exact test as applicable. P value of less than 0.05 was considered as significant.

## RESULTS

In figure-1 shows age distribution of the patients where in group-1 most of the patients belong to 40-50 years age group where as in group-2 majority belong to  $> 50$  years age group. The following figure is given below in detail:

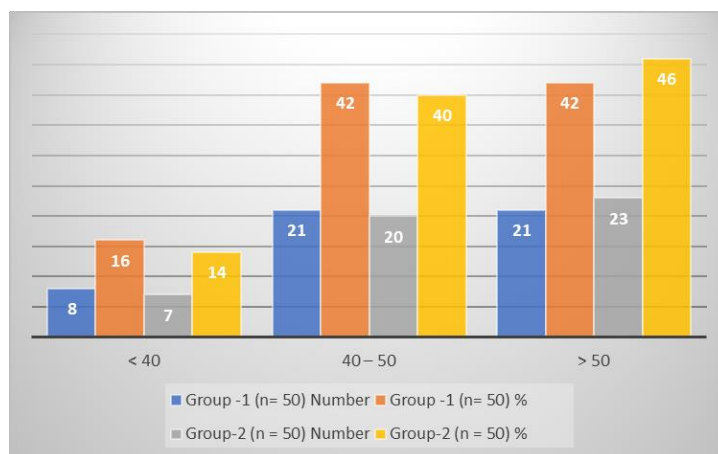


Fig-1: Age distribution of the patients.

In table-1 shows gender distribution of the patients were among the study population the male and female patients were identical in both the groups which

was statistically insignificant ( $p=0.74$ ) by  $\chi^2$  (Chi square) test. The following table is given below in detail:

Table-1: Gender distribution of the patients

Gender	Group-1, n	Group-1, %	Group-2, n	Group-2, %	P value
Male	45	90.0	44	88.0	0.74 <sup>ns</sup>
Female	5	10.0	6	12.0	

In figure-2 shows distribution of cardiovascular risk factors. Prevalence of smoking habit was higher in Group I than that in Group II (78% vs. 56%) with statistically significant difference (p=0.02). Hypertension was almost identically distributed between two groups (62% vs. 58%, p=0.68). Diabetes and dyslipidaemia were also higher in group I than that of group II (60% vs. 36%) and (66% vs. 34%)

respectively with statistically significant difference (p=0.02 and p=0.001). Finally, family history of IHD was higher in group I than that of group II (28% vs. 20%) with statistically insignificant difference (p=0.34). All the analysis of the above table were performed by  $\chi^2$  (Chi square) test. The following figure is given below in detail:

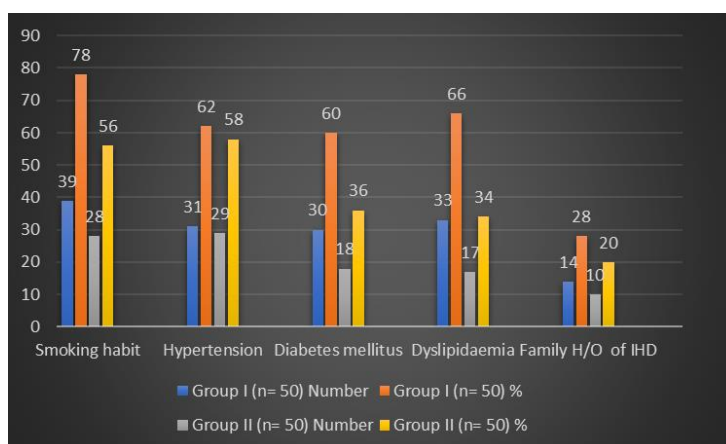


Fig-2: Distribution of cardiovascular risk factors.

In table-2 shows distribution of the patients according to systolic Diastolic BP where the mean systolic blood pressure was 117.8±19.1 mmHg in group I and 115.9±27.7 mmHg in group II. The mean diastolic blood pressure was 79.9±11.4 mmHg in group I and

77.9±13.3 mmHg in group II. There was no statistically significant difference (p=0.69 and p=0.68) in systolic and diastolic blood pressure by Student's t-test. The following table is given below in detail:

**Table-2: Distribution of the patients according to systolic Diastolic BP**

Variable	Group -1 (n = 50)	Group-2 (n = 50)	p-value
Systolic BP (mm Hg)	117.8±19.1	115.9±27.7	0.69 <sup>ns</sup>
Diastolic BP (9mm Hg)	79.9±11.4	77.9±13.3	0.68 <sup>ns</sup>

In table-3 shows association of predictors of significant coronary artery disease with risk factors where the regression model which included 4 predictor variables observed to be associated with significant coronary artery disease were directly entered into the binary logistic regression model. Hosmer and

Lemeshow goodness-of-fit test demonstrated that the model was a good fit model which could predict 88.% of significant coronary artery disease by the coronary artery disease severity, stenosis >70% in any coronary artery, for left main >50% stenosis, correctly (p=0.303). The following table is given below:

Table-3: Association of predictors of significant coronary artery disease with risk factors (n=100)

Variables of interest	Univariate analysis		Multivariate analysis	
	OR (95% CI)	p-value	OR (95% CI)	p-value
Smoking	3.78 (1.79-8.96)	0.01 <sup>s</sup>	2.79 (1.13-6.36)	0.02 <sup>s</sup>
Diabetes Mellitus	2.59 (1.46-6.20)	0.02 <sup>s</sup>	2.24 (1.11-5.54)	0.04 <sup>s</sup>
Dyslipidaemia	1.84 (1.34-2.84)	0.01 <sup>s</sup>	1.66 (1.51-2.28)	0.01 <sup>s</sup>
cTn-I level (>20 ng/ml)	1.59 (1.01-1.89)	0.001 <sup>s</sup>	1.49 (1.02-1.79)	0.001 <sup>s</sup>

s=Significant  
ns=Not significant

## DISCUSSION

Smoking was the most common risk factor observed among the current study population and was found 78% patients in group I (cTn I level ≥20ng/ml) and 56% patients in group II (cTn I level <20ng/ml) with statistically significant difference (p=0.02) between the

two groups. One study found in their study population 81.8% smoker. [5]. Another report observed in their study 73.3% smoker [6], One article reported that, 20% smoker with group I, 27% smoker with low group II and another study observed in their study population (46% vs. 47%) smoker in group I and in group II

respectively, the cause of this discordance with the current study might be due to geographical difference[7, 8].

Regarding other risk factors in this current study it was observed that hypertension was almost identically distributed (62% vs. 58%), without any statistical difference between the two groups ( $p=0.68$ ). One study reported that (77% vs. 72%) in group I and in group II[5]. One study found that, 66% and 65% hypertensive patients in group I and in group II respectively, another study observed in their study population 58.9% was hypertensive[8].

DM was higher in group I than that of group II (60% vs. 36%) with statistically significant difference ( $p=0.02$ ) between the two groups. One study observed in their study population 47.1% with DM, which was similar with the current study [7]. The cause of this discordance between those studies with the current study might be due to difference of racial, geographical and dietary habit.

Regarding dyslipidaemia, it was higher in group I than that of group II (66% vs.34%) with statistically significant difference ( $p=0.001$ ) between the two groups. One report observed in their study population 53.33% dyslipidaemic[9] and another report observed in their study population 72.06% dyslipidaemic which were also similar with the current study[10]. One study observed in their study family history of IHD (25% vs. 25%)[11] and another study found in their study family history of IHD (32% vs. 32%) in group I and in group II respectively, with no significant difference between the two groups, which were also consistent with the present study[9].

There were no statistically significant difference in systolic and diastolic blood pressure ( $p=0.69$  and  $p=0.68$ ) between the two groups. One study observed in their study mean heart rate was 86 beats/min in group I and 79 beats/min in group II, the mean systolic blood pressure was 146 mmHg in group I and 148 mmHg in group II which had similarities with the present study [12].

Multivariate logistic regression analysis and odds ratio (95%CI) of explanatory variables were done for 100 STEMI patients considering CAD (Significant coronary artery disease - coronary stenosis >70%, for left main >50% stenosis) as dependent variable.

## CONCLUSION

From our study we can conclude that smoking, diabetes mellitus, dyslipidaemia, and cTn I were emerged as independent predictors of CAD. Further study is needed for better outcome.

## REFERENCES

1. Malik A and Mohibullah AKM. Acute Coronary Syndrome: Guideline for Management'. *Bangladesh Card Soc*, 2004;3(4).
2. Adams 3rd JE, Bodor GS, Davila-Roman VG, Delmez JA, Apple FS, Ladenson JH, Jaffe AS. Cardiac troponin I. A marker with high specificity for cardiac injury. *Circulation*. 1993 Jul;88(1):101-6.
3. Almeda FQ, Calvin JE, Parrillo JE, Sun FG, Barron JT. Prevalence of angiographically significant stenosis in patients with chest pain and an elevated troponin I level and normal creatine kinase and creatine kinase-MB levels. *The American journal of cardiology*. 2001 Jun;87(11):1286-9.
4. Amanullah M, Thapa LB, Farooque GM, Hasanat A, Mohibullah AK, Malik A. A profile of 51 cases of acute myocardial infarction amongst young Bangladeshi. In *Proceedings of Bangladesh-Japan joint conference on cardiovascular disease*. 1984: 118-121.
5. Ammann P, Pfisterer M, Fehr T and Ricki, Hans. 'Raised cardiac troponin', *BMJ*.2004; 328: 1028-1029.
6. Antman EM, Tanasijevic MJ, Thompson B, Schactman M, McCabe CH, Cannon CP, Fischer GA, Fung AY, Thompson, p., Wybenga, D. and Braunwald, E. 'Cardiac specific troponin I levels to predict the risk of mortality in patients with acute coronary syndromes', *N Engl J Med*.1996; 335:1342-1349.
7. Antman E, Bassand JP, Klein W, Ohman M, Sendon JL, Rydén L, Simoons M, Tendera M. Myocardial infarction redefined—a consensus document of the Joint European Society of Cardiology/American College of Cardiology committee for the redefinition of myocardial infarction: the Joint European Society of Cardiology/American College of Cardiology Committee. *Journal of the American College of Cardiology*. 2000 Sep 1;36(3):959-69.
8. Antman EM, Cohen M, Bernink PJ, McCabe CH, Horacek G, Mautner B, Corbalan R, Radley D and Braunwald E. 'The TIMI risk score for unstable angina/non-ST elevation MI: a method for prognostication and therapeutic decision making', *JAMA*. 2000; 284: 835-42.
9. Antman EM. 'ST-Elevation Myocardial Infarction Pathology, Pathophysiology and Clinical Features' in Bonow. RO, Mann DL, Zipes DP and Libby. P (eds.), *Braunwald's Heart Disease*, 9<sup>th</sup> edition, Elsevier, Saunders, Philadelphia. 2012; 1087-1110.
10. Apple FS, Quist HE, Doyle PJ, Otto AP and Mukarami MM. 'Plasma 99th percentile reference limits for cardiac troponin and creatine kinase MB mass for use with European Society of Cardiology/American College of Cardiology consensus recommendations', *Clin Chem*. 2003; 49(8) 1331-1336.

11. Apple FS, Smith SW, Pearce LA, Ler R, Murakami MM, Benoit MO, Levy C, Dumas C, Paul JL. Use of the bioMérieux VIDAS® troponin I ultra assay for the diagnosis of myocardial infarction and detection of adverse events in patients presenting with symptoms suggestive of acute coronary syndrome. *Clinica Chimica Acta*. 2008 Apr 1;390(1-2):72-5.
12. Apple FS, Pearce LA, Smith SW, Kaczmarek JM, Murakami MM. Role of monitoring changes in sensitive cardiac troponin I assay results for early diagnosis of myocardial infarction and prediction of risk of adverse events. *Clinical chemistry*. 2009 May 1;55(5):930-7.